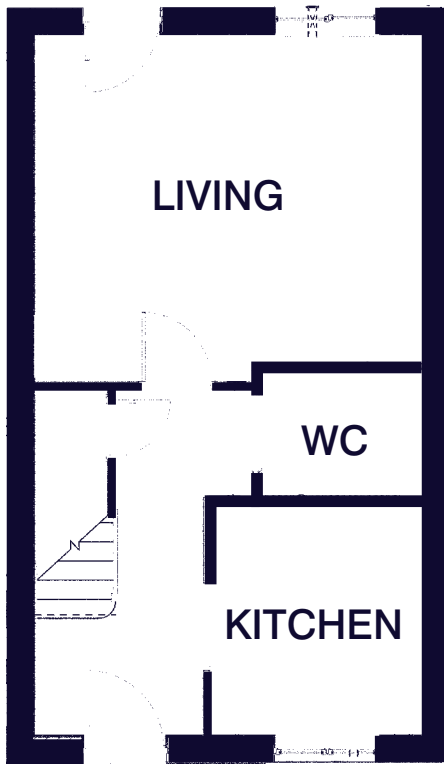


Kingsbourne Nantwich

Tavy 2 bedroom home

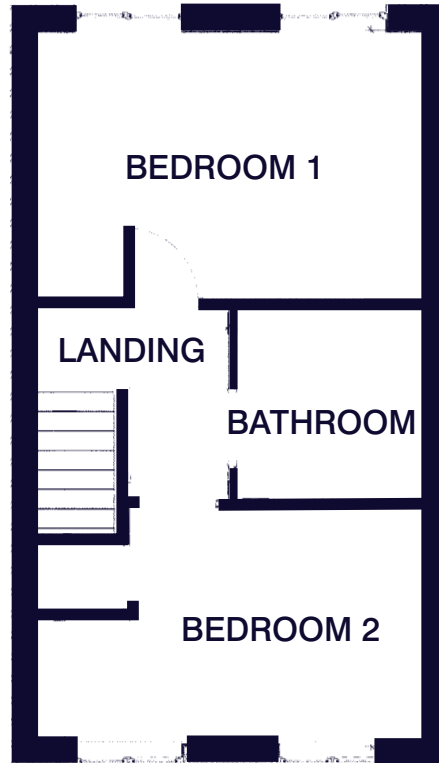


Ground Floor

LIVING 4.6m x 3.8m*

KITCHEN 2.5m x 2.7m*

WC 1.9m x 1.6m*



First Floor

BEDROOM 1 4.6m x 3.1m*

BEDROOM 2 4.6m x 2.7m*

BATHROOM 2.2m x 2.2m*

*Please note the images shown are for illustrative purposes only, and no information contained within this document will form any part of a contract. All measurements given are approximate.

The detailed plans and specification of each property are available at our Sales Office during opening hours, and prospective purchasers must check the details of their particular plot prior to making a reservation.

.....
We're your Homebuilder

