

# THE MAPLE - 4 BEDROOM HOUSE - SEMI DETACHED

## ROOM DIMENSIONS

### THE MAPLE - 4 BED

LOUNGE	3.16m x 4.72m	10'4" x 15'5"
KITCHEN/DINING	5.55m* x 3.60m*	18'2"* x 11'9"*
CLOAKS	0.97m x 2.05m	3'2" x 6'8"

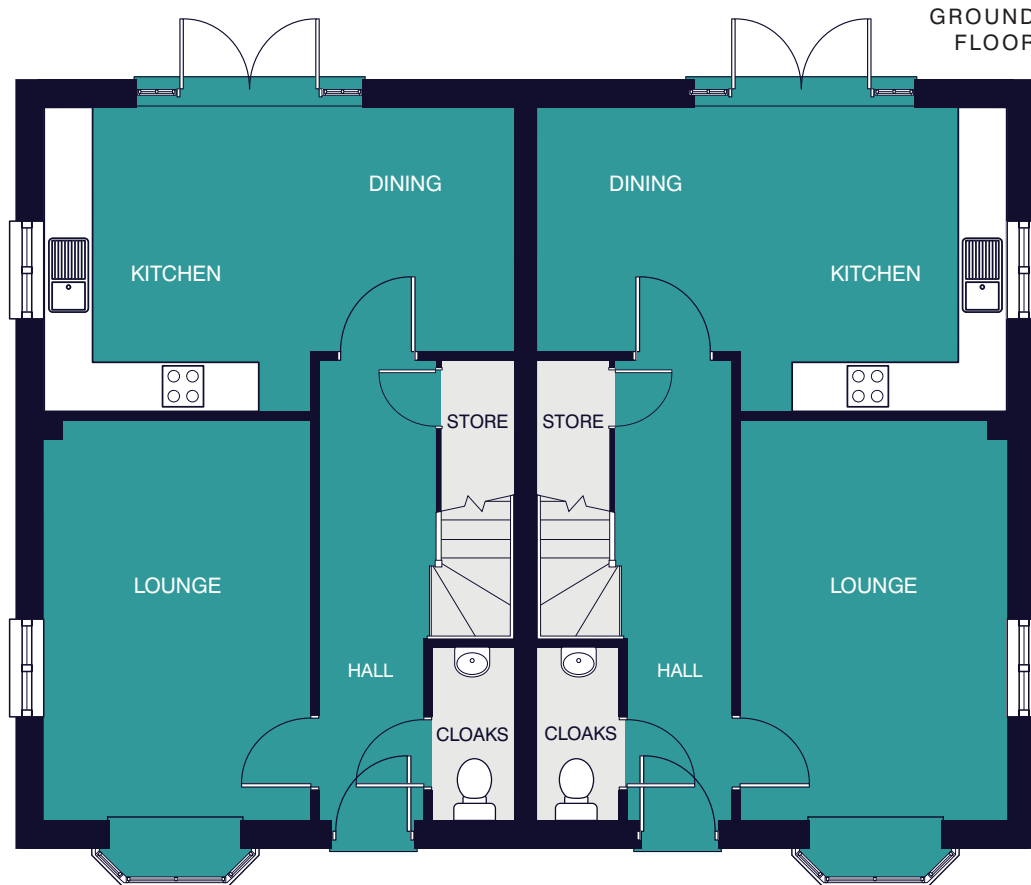
\* MAXIMUM ROOM DIMENSIONS

## ROOM DIMENSIONS

### THE MAPLE - 4 BED

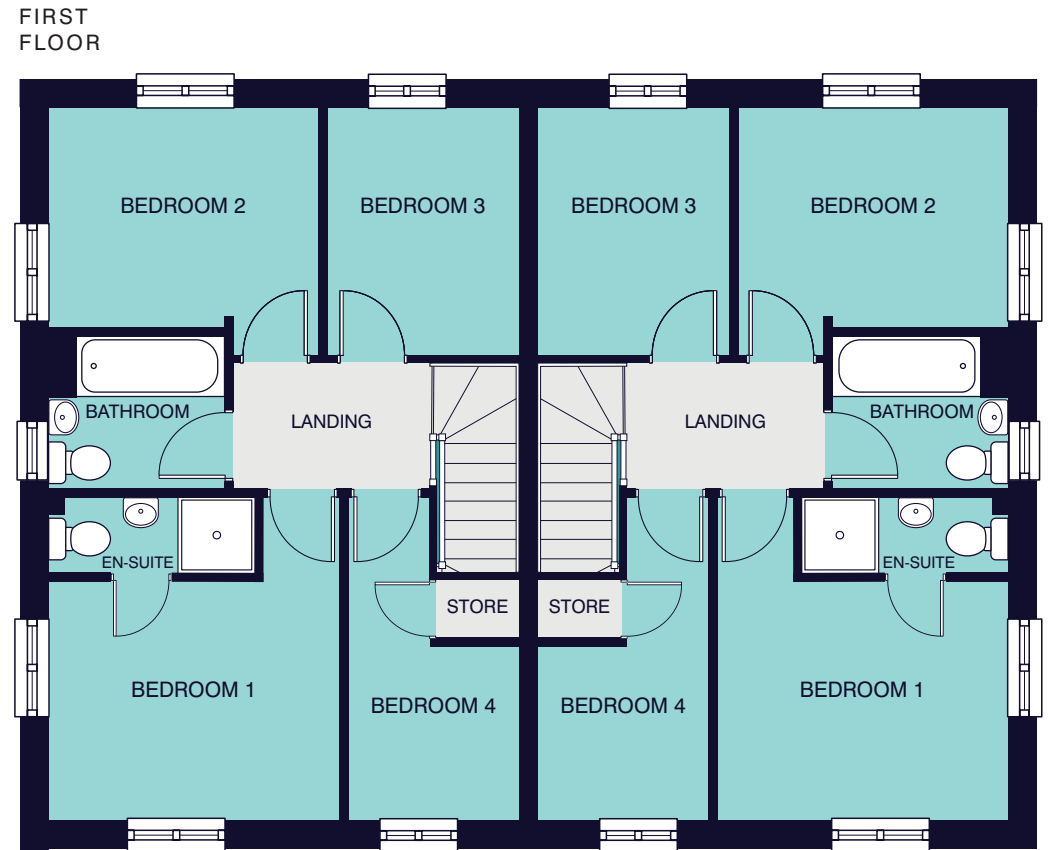
BEDROOM 1	3.48m* x 3.84m*	11'5"* x 12'7"*
EN-SUITE	2.45m x 0.90m	8'0" x 2'11"
BEDROOM 2	3.22m* x 2.91m*	10'6"* x 9'6"*
BEDROOM 3	2.27m x 2.91m	7'5" x 9'6"
BEDROOM 4	2.01m* x 3.84m*	6'7"* x 12'7"*
BATHROOM	2.10m x 1.83m	6'10" x 6'0"

\* MAXIMUM ROOM DIMENSIONS



PLOT 48

PLOT 47



PLOT 48

PLOT 47